

*Echinogammarus*

- 1 Metasomites and urosomites in mature adult males covered with numerous tufts of long, curved setae (this is much less pronounced in females and juveniles) (Plate 22.1). Propodit of gnathopod I distinctly smaller than propodit of gnathopod II.

*Echinogammarus berilloni*

- Metasomites and urosomites in mature adult males not covered with numerous tufts of long setae (Plate 22.2). Propodit of gnathopod I of similar length as propodit of gnathopod II.

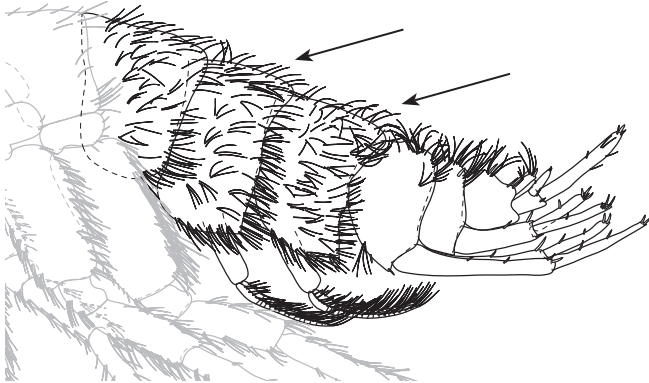
**2**

- 2 Antenna II without pronounced dense setation, existing setae never curled or bent (Plate 22.3). Telson oval, longer than wide (Plate 22.4).

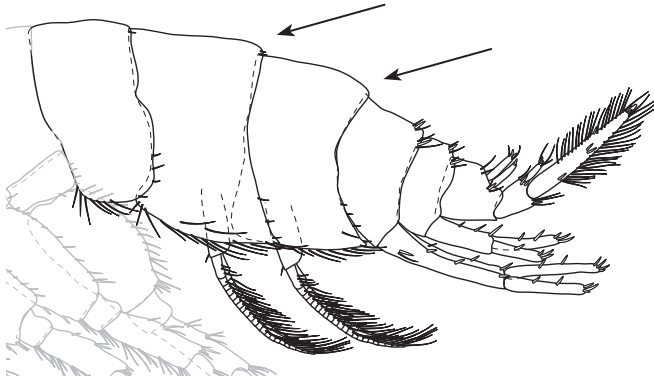
*Echinogammarus stammeri*

- Antenna II with pronounced setation, some setae curled or bent, resulting in a brush-like habitus (Plate 22.5). Telson triangular, as long as wide (Plate 22.6).

**3**



22.1 *Echinogammarus berilloni* metasome and urosome



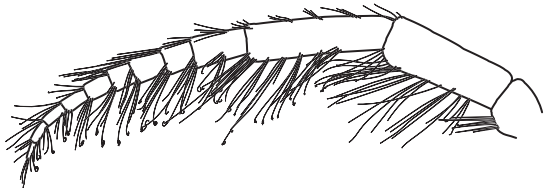
22.2 *Echinogammarus stammeri* metasome and urosome



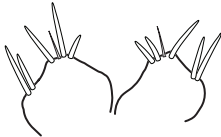
22.3 *Echinogammarus stammeri* antenna II



22.3 *Echinogammarus stammeri* telson



22.5 *Echinogammarus ischnus* antenna II



22.3 *Echinogammarus ischnus* telson

3 Uropod III of males densely covered with curled setae; Uropod III of females at least distally densely covered with setae (Plate 23.1). Urosomite I and II lateral with two to three groups of spines (two to three spines each). Ratio of length of uropod III and urosomite (excl. telson) about 1.1 : 1.0. Adult animals larger than 12 mm.

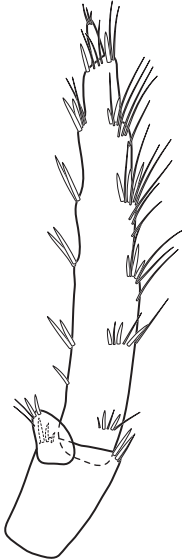
***Echinogammarus trichiatus***

- Uropod III of males with scattered setae (Plate 23.2). Urosomite I and II lateral with one to two solitary spines, accompanied with one seta. Ratio of length of uropod III and urosomite (excl. telson) about 1.5 : 1.0. Bodysize up to 12 mm.

***Echinogammarus ischnus***



23.1 *Echinogammarus trichiatus* uropod III



23.2 *Echinogammarus ischnus* uropod III